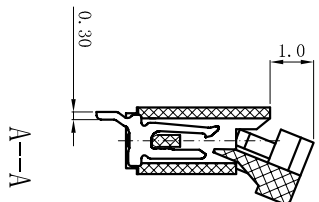
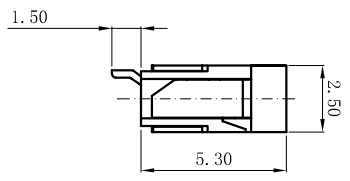
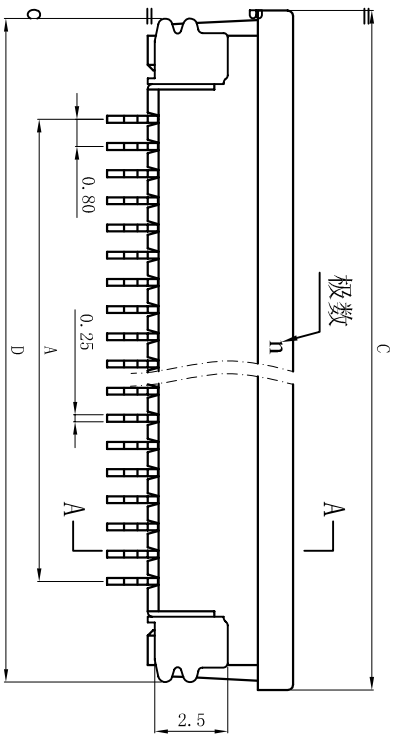
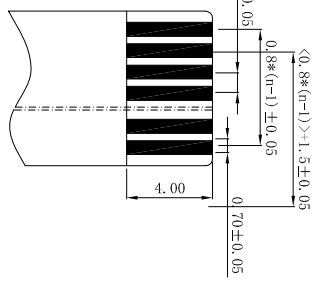
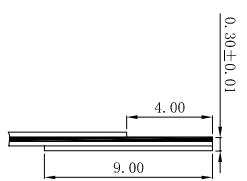
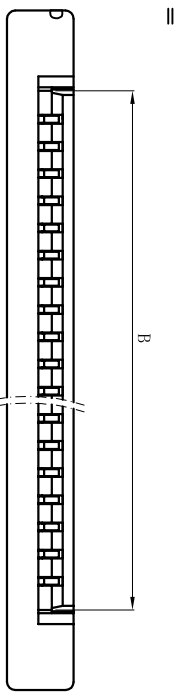


PITCH 0.8mm FPC CONNECTOR SMT TYPE

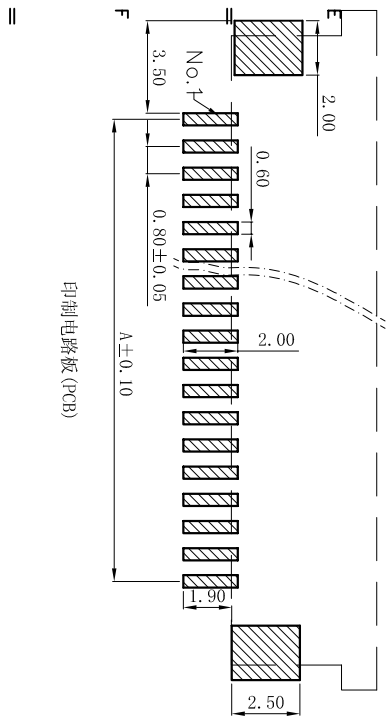


性能:
 额定电流: 0.5A
 额定电压: 50V
 耐电压: 500V
 接触电阻: $\leq 20m\Omega$
 绝缘电阻: 800M Ω
 工作温度: -20°C~+85°C

塑料 (材质): LCP, UL94V-0
 锁扣 (材质): PPS, UL94V-0
 插簧 (材质): 磷青铜, 镀锡
 焊片 (材质): 磷青铜, 镀锡



适用电缆



孔位	A	B	C	D
4	2.40	4.40	10.20	9.40
5	3.20	5.20	11.00	10.20
6	4.00	6.00	11.80	11.00
7	4.80	6.80	12.60	11.80
8	5.60	7.60	13.40	12.60
9	6.40	8.40	14.20	13.40
10	7.20	9.20	15.00	14.20
11	8.00	10.00	15.80	15.00
12	8.80	10.80	16.60	15.80
13	9.60	11.60	17.40	16.60
14	10.40	12.40	18.20	17.40
15	11.20	13.20	19.00	18.20
16	12.00	14.00	19.80	19.00
17	12.80	14.80	20.60	19.80
18	13.60	15.60	21.40	20.60
19	14.40	16.40	22.20	21.40
20	15.20	17.20	23.00	22.20
21	16.00	18.00	23.80	23.00
22	16.80	18.80	24.60	23.80
23	17.60	19.60	25.40	24.60
24	18.40	20.40	26.20	25.40
25	19.20	21.20	27.00	26.20
26	20.00	22.00	27.80	27.00
27	20.80	22.80	28.60	27.80
28	21.60	23.60	29.40	28.60
29	22.40	24.40	30.20	29.40
30	23.20	25.20	31.00	30.20
31	24.00	26.00	31.80	31.00
32	24.80	26.80	32.60	31.80
33	25.60	27.60	33.40	32.60
34	26.40	28.40	34.20	33.40
35	27.20	29.20	35.00	34.20

GENERAL TOLERANCE 0.8MM±0.10MM UNIT mm SCALE

REVA SIZE A4 SHEET CHECKED

尺寸公差: X: ±0.30, .X: ±0.25, .XX: ±0.20

尺寸公差: X: ±0.5°, .X: ±2°, .XX: ±1°

0.8mm间距FPC连接器

0.8MM±0.10MM

LiXi@DRAWING/25'07